

SHERWIN-WILLIAMS.

**BUILDING OUR
FUTURE**

An aerial photograph of a city skyline, likely Pittsburgh, featuring a prominent bridge with multiple arches and a multi-lane highway. The city buildings are visible in the background under a cloudy sky with a hint of sunset or sunrise.

City of Brecksville – Public Meeting

August 26, 2021

Agenda

- Welcome & Introductions
- Overall Site Plan
- Updated Site Logistics
- Preliminary Building Design

Welcome & Introductions

R&D Center Project Summary

- Sherwin-Williams plans to invest more than \$250 million to build its new R&D Center.
 - Approximately 600,000 square feet in size; will house ~ 900 employees
- When completed, the R&D Center will be a next generation workplace that supports serving our customers at the highest level, retaining and attracting top talent, and igniting creativity, collaboration and industry-leading innovation.
- Builds upon our 155-year legacy as one of Northeast Ohio's top employers and drivers of economic activity, as well as continue our long-standing community support.
- Anticipate that the R&D Center will be a catalyst for additional office, residential, hospitality, and retail development, generating incremental tax revenues for the city and the schools.
- The R&D Center will be responsible for product development, coatings research, color technology and process engineering.

Overall Site Plan

Preliminary Site Plan

Location: 6701 Miller Road

Zoning: O-L (Office Laboratory)

Proposed Use: Research and Development Building

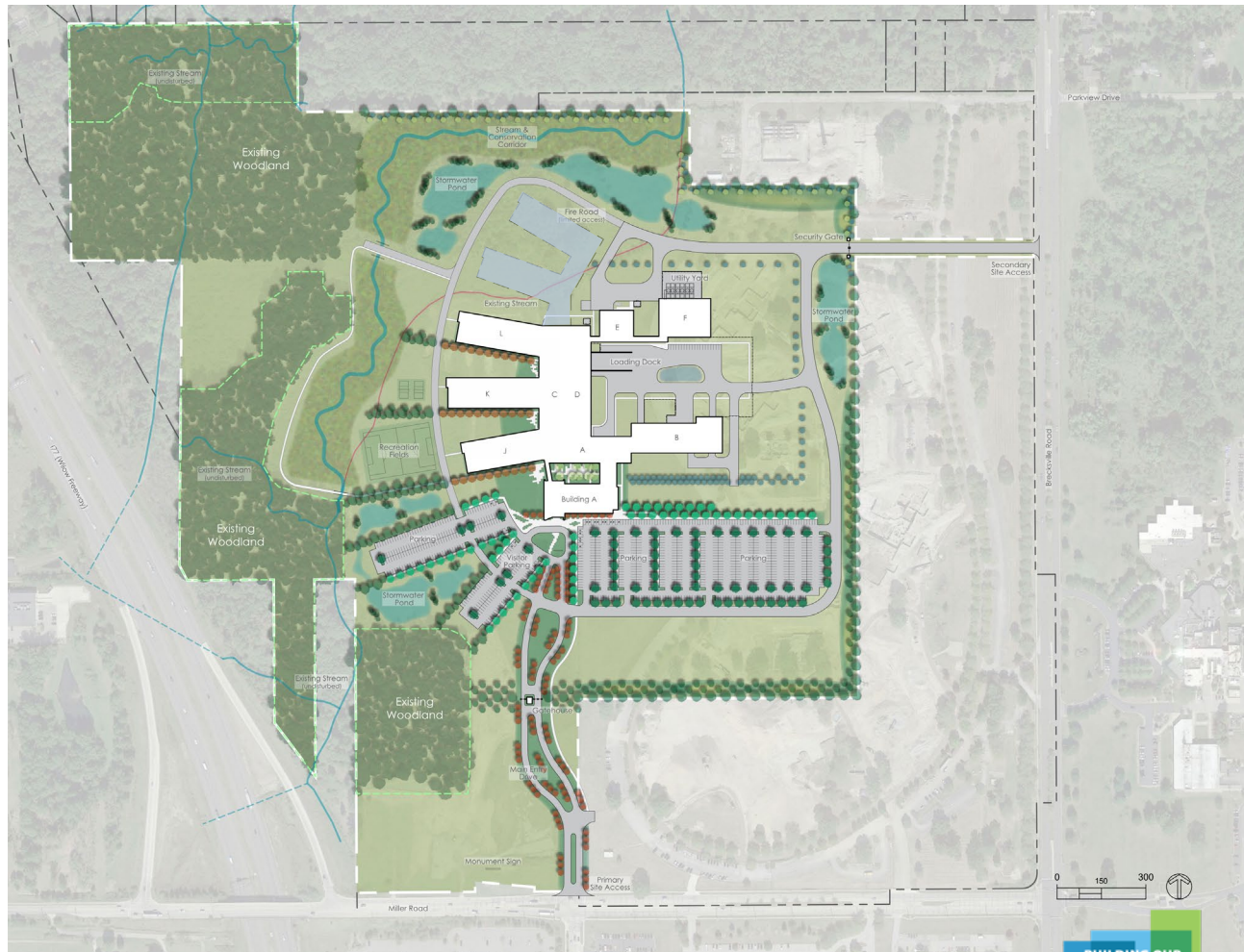
Conditional Use: Cafeteria and Manufacturing for Research

Site Acreage: 118.8 total

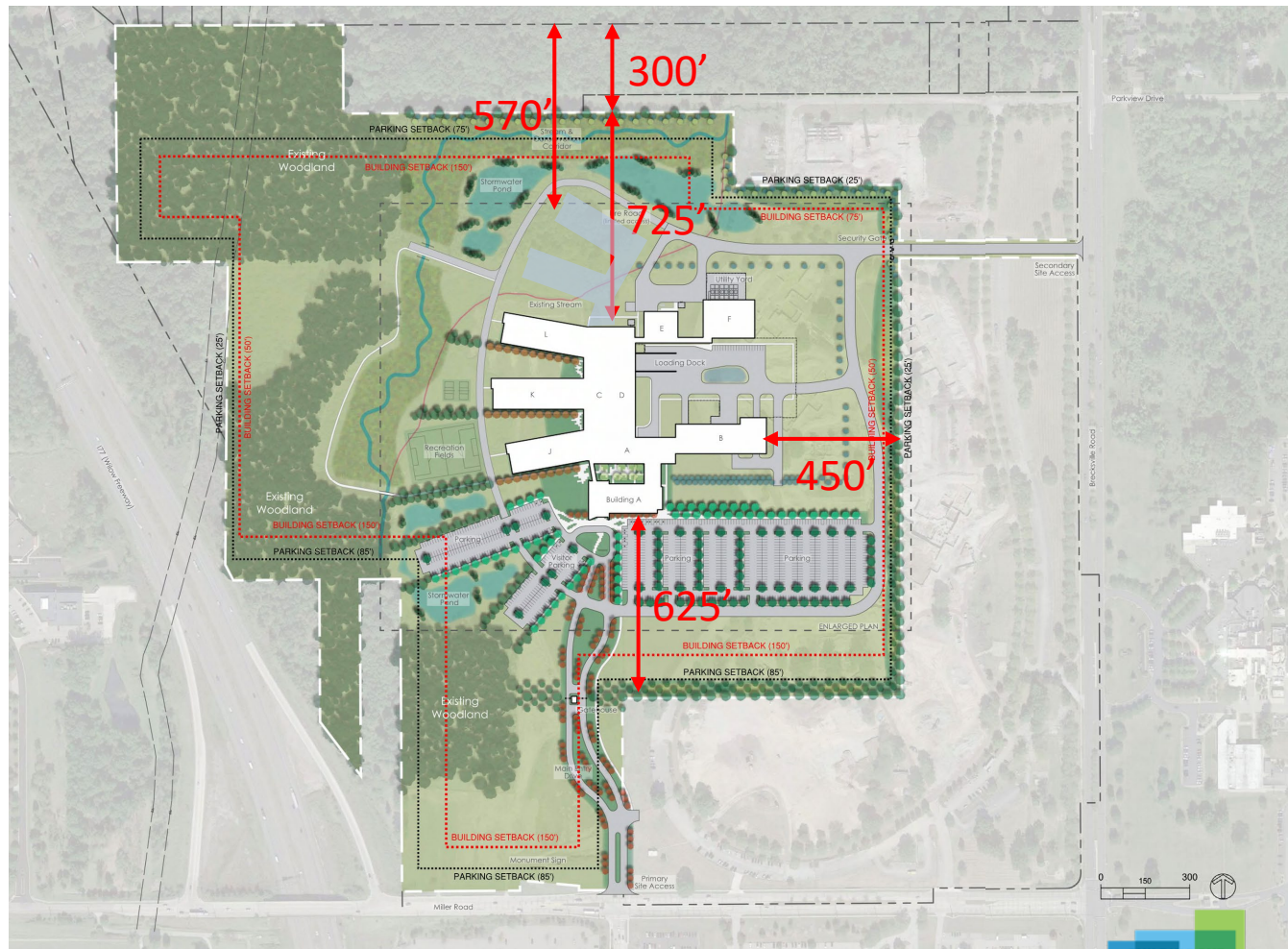
Conservation Acreage: 19.65

Building Area: 600,000 GSF

Height: 3 Stories, 71' Tall



Preliminary Site Plan



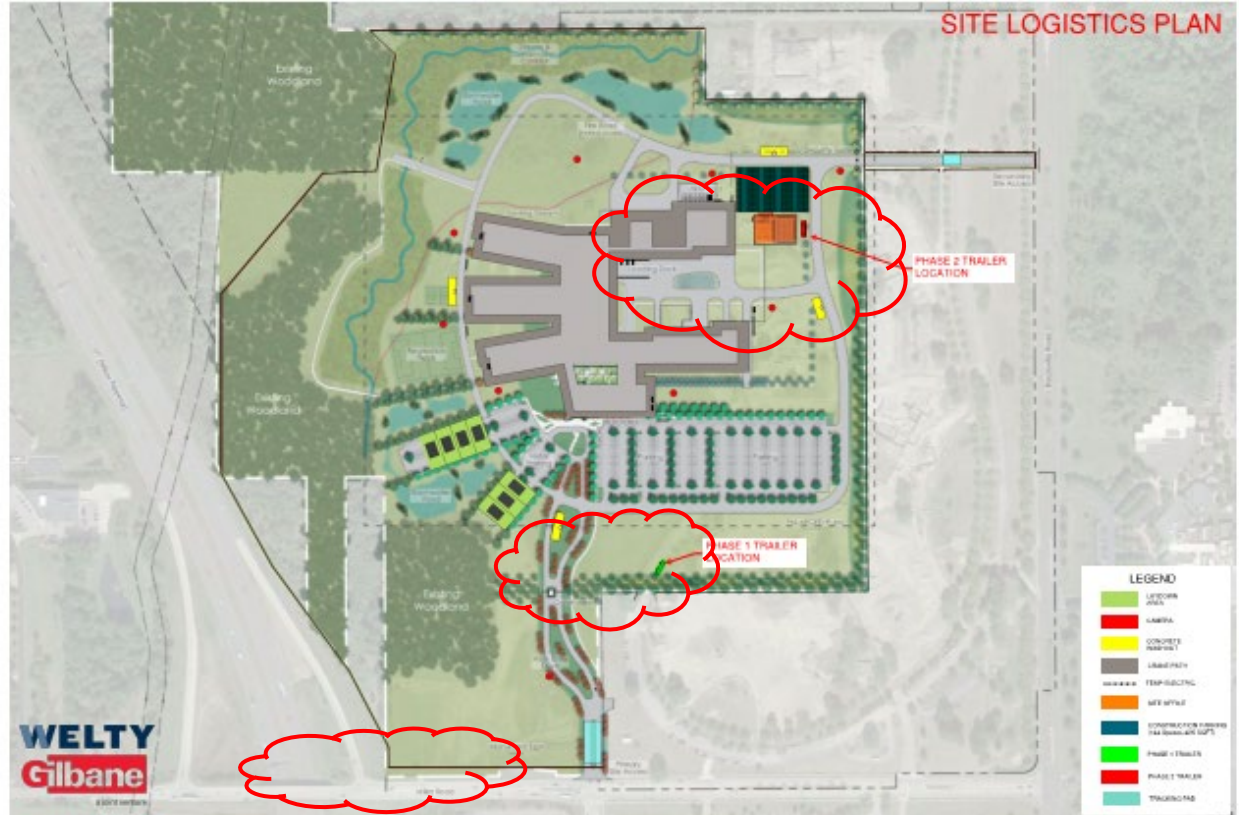
Preliminary Site Plan



Updated Site Logistics

Site Logistics

- Adjusted South Fence
- Construction Trailer Locations Identified



2 SITE LOGISTICS PLAN
NOT TO SCALE

Preliminary Building Design

Preliminary Building Design



Preliminary Building Design



Preliminary Building Design



Preliminary Building Design





THANK YOU